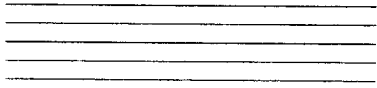


Elements of Music Notation

Staff: The lines we write notes on.



Cleff: Tells us which notes are on the staff (lines).

(Treble)



(Bass)



Time Signature: There are 2 numbers. The top number tells us what to count to in each measure. Don't worry about the bottom number just yet!!!



Sharps and Flats: Raises or lowers a note. If you see it on the staff before the time signature, it means that that note is raised or lowered in the whole song.



Here is what it looks like all put together:

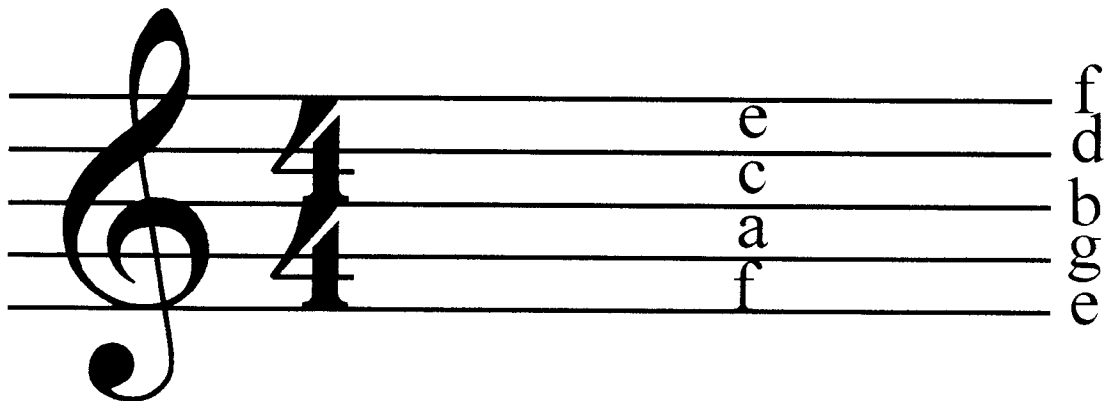


Reading Music

The music alphabet is: A B C D E F G. After G, it goes back to A. A B C D E F and G are all the white notes on the piano.

There are five different black notes. The names of the black notes have two names. The ones in bold are what they are called most of the time: {A#/B**b**} {C#/D**b**} {D#/E**b**} {F#/G**b**} {G#/A**b**}.

Reading music on the staff is easy. When there is a treble cleff use these two ways to remember.



For the spaces: It spells FACE !!!!!

For the lines: Elvis' Guitar Broke Down Friday

Rhythm Pyramid

